

## Velineon 3500 Brushless Motor Instructions

Covers Part #3351R



Thank you for purchasing the Velineon™ 3500 sensorless brushless motor. The Velineon 3500 brushless motor is precision-matched for use in 1/10th scale Traxxas models, delivering the perfect balance of brutal horsepower and long run times. Smooth-running performance

is built in with ultra high-temperature sintered Neodymium magnets, high-speed ball bearings, and a precision balanced rotor.

The Velineon 3500 can be used with many after-market brushless electronic speed controls, but is designed to work with the Traxxas VXL-3s Electronic Speed Control for optimal speed and efficiency. The key to the Velineon's extreme power output is total system optimization. Each component is carefully engineered to work with the other system components to eliminate restriction and allow maximum power flow.

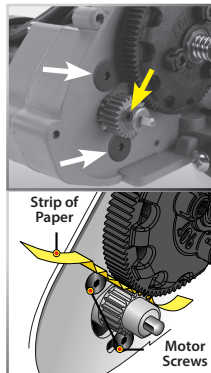
### Velineon 3500 Specifications:

Type .....	Sensorless brushless
RPM/volt .....	3500
Magnet type.....	Ultra High-Temperature Sintered Neodymium
Connection type .....	TRX 3.5mm bullet connectors
Wire size .....	12-gauge
Diameter .....	36mm (1.42") (540 size)
Length.....	56.1mm (2.21")
Weight .....	248g (8.75oz)

### Installation

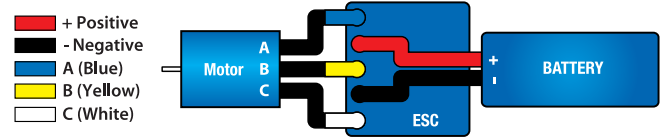
(Traxxas Rustler shown, Bandit and Stampede are similar.)

1. Mount the Velineon Motor to the gearbox using 3x8mm screws and tighten finger tight (*white arrows*).
2. Mount the motor pinion to the motor shaft, make sure to tighten set screw against the flat portion of the shaft.
3. Set the gear mesh by running a narrow strip of notebook paper between the pinion and spur gears. Loosen the motor screws and slide the motor and pinion gear into the spur gear. Retighten the motor screws and then remove the strip of paper.

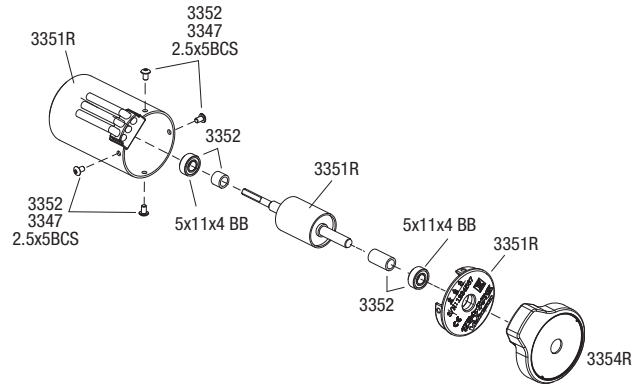


### Wiring Diagram

Follow the wiring diagram below for installing the Velineon 3500 with a VXL-3s Electronic Speed Control. For other speed controls, consult the manufacturer's instructions.



### Exploded View



- 3342 Bullet connectors, male, 3.5mm (3) / heat shrink
- 3354R Motor cover, endbell (Velineon 3500)
- 3352R Rebuild kit, Velineon 3500 (includes 5x11x4mm ball bearings (2), 2.5x5mm BCS (2), front and rear bushings)
- 3347 Screws, 2.5x5mm button-head machine (hex drive) (6)
- 3931 Screws, 3x8mm flat-head machine (hex drive) (6)

If you are planning to operate the motor at the higher limits of its capabilities, cut ventilation holes into your model's Lexan® body. Monitoring temperatures will extend the lives of the batteries and motors. To accurately monitor motor temperature and prevent overheating, a telemetry temperature sensor (part #6523) can be installed on the motor to continually monitor temperature as you drive. Generally, try to keep your motor below 200° F.

If you have questions or need technical assistance, call Traxxas at  
**1-888-TRAXXAS**  
 (1-888-872-9927) (U.S. residents only)